

# ACTIVECORE® AVQ200ISDBT RF SIGNAL INSPECTOR™ for ISDB-T/Tb off-air monitoring



## FEATURES:

- ▶ In-Band interference detection and visualization
- ▶ Rich set of tools for remote monitoring
- ▶ Transport Stream output (IP/ASI)

## Description

**AVQ200 RF Signal Inspector™** is an embedded RF signal analyzer for ISDB-T/TB (**ARIB STD-B31**) digital broadcasting standard. **AVQ200** is an extension of Avateq's line of products designed for remote off-air signal monitoring. Along with extensive RF measurements, **AVQ200** features advanced web-based user interface with unique interference monitoring tools, a report generator, and a user-defined alarm engine. This combination of functionality and available set of measurements makes **AVQ200** an efficient tool for on-site or remote signal quality monitoring in the service area.

## Technical Specification

<b>Supported standards:</b>	ISDB-T/Tb (ARIB STD-B31)	<b>Control and Monitor Ports:</b>	
<b>Main signal input "RF in":</b>		Ethernet:	RJ45 10/100/1000
Connector:	50Ω, SMA	Transport Stream:	IP (RJ45)/ASI (HDBNC) <sup>(1)</sup>
Level:	-80 .. +5 dBm	<b>Form factor:</b>	205mm x 105mm x 50mm (8.1" x 4.1" x 2")
Frequency range:	42 .. 1000 MHz	<b>Operating temperature:</b>	0 .. 50, °C
Frequency tuning step:	1kHz	<b>Power Supply:</b>	12VDC, 4 Amp
			(1) - ASI TS output is optional and requires hardware installation.

## Monitored Parameters

<b>General parameters:</b>	<ul style="list-style-type: none"> <li>- MER;</li> <li>- Signal PAPR;</li> <li>- Bandwidth;</li> <li>- Frequency and Sampling rate shifts;</li> <li>- Shoulder attenuation;</li> <li>- Emission/Spectral mask compliance;</li> <li>- Amplitude and Phase response;</li> <li>- Group Delay across bandwidth.</li> </ul>	<b>ISDB-T/Tb standard specific:</b>	<p>Parameters:</p> <ul style="list-style-type: none"> <li>- Pre/Post-RS BER for each layer;</li> <li>- ISDB-T/Tb mode and GI length;</li> <li>- TMCC information.</li> </ul> <p>Plots:</p> <ul style="list-style-type: none"> <li>- Layer A,B,C Constellations</li> </ul>
<b>General plots:</b>	<ul style="list-style-type: none"> <li>- Spectrum of the main lobe and in-band interference;</li> <li>- Channel Amplitude/Phase and Impulse responses;</li> <li>- CCDF;</li> <li>- SFN Drift;</li> <li>- Constellation;</li> <li>- Echo profile;</li> </ul>	<b>Default set of alarms:</b>	<ul style="list-style-type: none"> <li>- Input Signal level;</li> <li>- Spectrum shoulder levels;</li> <li>- Signal MER;</li> <li>- SFN Echo profile variation;</li> <li>- Frequency shift.</li> </ul>
		<b>Data logging and reporting:</b>	<ul style="list-style-type: none"> <li>- Detailed report with data and plots;</li> <li>- Event and alarm log;</li> <li>- Main parameters internal log.</li> </ul>
		<b>Software interfaces:</b>	<ul style="list-style-type: none"> <li>- Web GUI;</li> </ul>

## Measurements and Metrics

- ▶ In-band interference power spectral density;
- ▶ Signal statistic: MER, signal RMS, PAPR, signal CCDF;
- ▶ Echo profile with monitoring capabilities for SFN applications;
- ▶ Signal group delay and frequency responses;
- ▶ Multipath echo and interference detection, estimation and visualization.

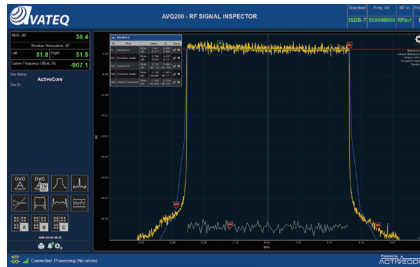
## Applications

- ▶ ISDB-T/Tb coverage area 24/7 QoS monitor;
- ▶ Remote monitoring for broadcasting repeater system network;
- ▶ SFN/Echo profile monitor;
- ▶ In-field and production testing.

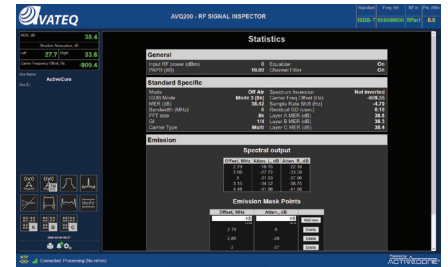
## Plot tools and accessories

- ▶ Normal and Delta markers;
- ▶ Min/Max hold;
- ▶ Manual scale adjustment;
- ▶ Cross bar;
- ▶ Thresholds for SFN profile and in-band interference level.

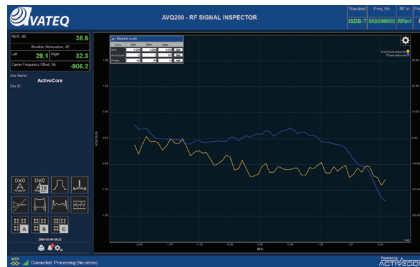
## Samples of Reported Parameters and Plots



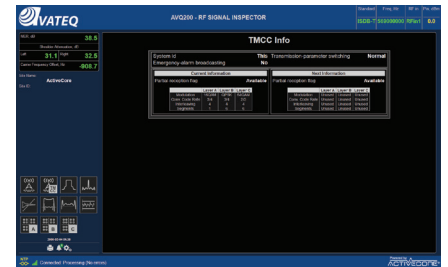
ISDB-T/Tb Spectrum with In-Band and Markers



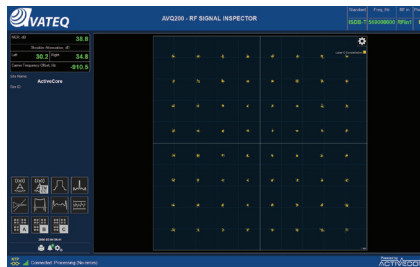
ISDB-T/Tb Statistics



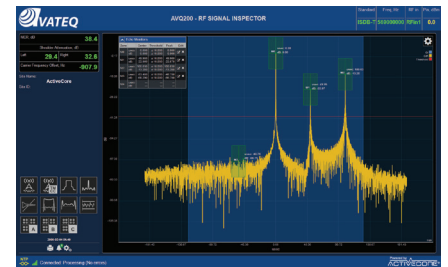
Channel Amplitude/Phase responses



TMCC Information

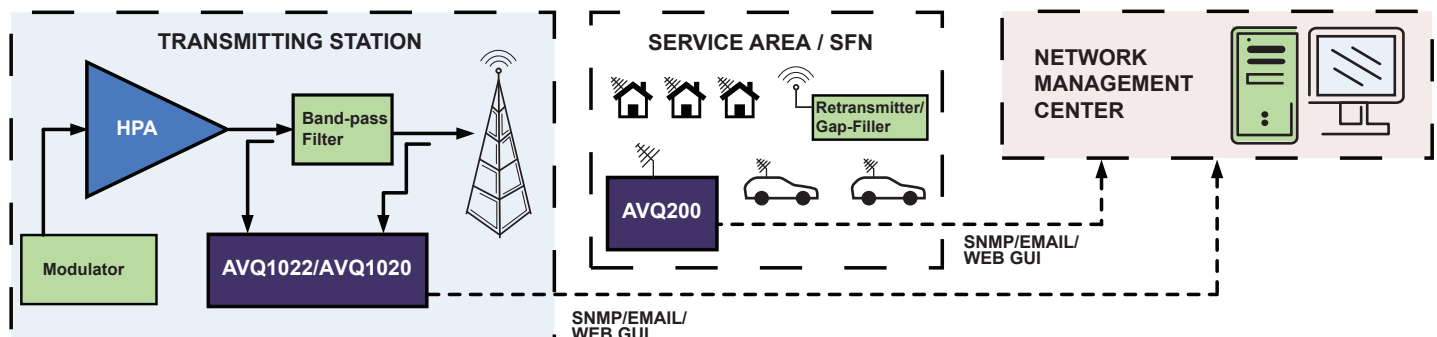


Layer C Constellation



SFN/Echo profile

## Application Block-Diagram



## Contact Information

**AVATEQ CORP.**  
3555 - 14th Ave., Unit 18  
Markham, ON L3R 0H5  
Canada

Phone: **1.416.342.0761**  
Fax: **1.416.342.0608**  
E-mail: **info@avateq.com**  
Web: **www.avateq.com**

