

# ACTIVECORE®

## AVQ200ATSC

# RF SIGNAL INSPECTOR™

for ATSC 1.0 and ATSC 3.0 off-air monitoring



### FEATURES:

- ▶ In-Band interference detection and visualization
- ▶ Rich set of tools for remote monitoring
- ▶ IP Transport Stream output

### Description

**AVQ200 RF Signal Inspector™** is an embedded RF signal analyzer for ATSC 1.0 (**A/53** and **A/153**) and ATSC 3.0 (**A/321:2016**, **A/322:2018** except for Annexes K and L, **A/330:2019**) digital broadcasting standards. **AVQ200** is an extension of Avateq's line of products designed for remote off-air signal monitoring. Along with extensive RF measurements, **AVQ200** features advanced web-based user interface with unique interference monitoring tools, a report generator, and a user-defined alarm engine. This combination of functionality and available set of measurements makes **AVQ200** an efficient tool for on-site or remote signal quality monitoring in the service area.

### Technical Specification

<b>Supported standards<sup>(1)</sup>:</b>	- ATSC 1.0 (A/53, A/153) - ATSC 3.0 (A/321:2016, A/322:2018 except for Annexes K and L, A/330:2019 )	- Mandatory Modulation and Coding Combinations; - All guard interval patterns; - Single and multiple PLPs; - LDM (Layered Division Multiplexing); - ALP (ATSC Link Layer Protocol) output.
<b>Main signal input "RF in":</b>		
Connector:	50Ω, SMA	
Level:	-80 .. +5 dBm	
Frequency range:	42 .. 1000 MHz	
Frequency tuning step:	1kHz	
<b>ATSC 1.0:</b>	- 6MHz bandwidth; - 8VSB modulation; - 2/3 code rate.	
<b>ATSC 3.0:</b>	- 6, 7, and 8MHz bandwidth; - 8K, 16K, and 32K FFT sizes;	
		<b>Control and Monitor Ports:</b>
		Ethernet: RJ45 10/100/1000
		Transport Stream Output: IP (RJ45)
		<b>Form factor:</b> 205mm x 105mm x 50mm (8.1" x 4.1" x 2")
		<b>Operating temperature:</b> 0 .. 50, °C
		<b>Power Supply:</b> 12VDC, 4 Amp

(1) - Subject to licensing.

### Monitored Parameters

<b>General parameters:</b>	- MER/SNR; - Signal PAPR; - Bandwidth; - Frequency and Sampling rate shifts; - Shoulder attenuation; - Emission/Spectral output; - Amplitude and Phase response; - Group Delay across bandwidth.	<b>ATSC 3.0 standard specific:</b>	Parameters: - MER for Bootstrap, L1 and PLP; - ATSC 3.0 frame structure; - Bootstrap L1D and L1B signaling info; - LDPC BER for L1 and selected PLP; - Decoded Bootstrap and L1 info.  Plots: - Bootstrap, L1, LDM, and selected PLP constellations;
<b>General plots:</b>	- Spectrum of the main lobe and in-band interference; - Channel Amplitude/Phase and Impulse responses; - CCDF; - Constellation; - Echo profile;	<b>Default set of alarms:</b>	- Input Signal level; - Spectrum shoulder levels; - Signal MER; - SFN Echo profile variation; - Frequency shift.
<b>ATSC 1.0 standard specific:</b>	Parameters: - ATSC pilot Amplitude and Phase Errors;  Plots: - Eye Diagram.	<b>Data logging and reporting:</b>	- Detailed report with data and plots; - Event and alarm log; - Main parameters internal log.
		<b>Software interfaces:</b>	- Web GUI;

# AVQ200ATSC ActiveCore® RF Signal Inspector™ for ATSC 1.0 and ATSC 3.0

## DATASHEET

### Measurements and Metrics

- ▶ In-band interference power spectral density;
- ▶ Signal statistic: MER, signal RMS, PAPR, signal CCDF;
- ▶ Echo profile with monitoring capabilities for SFN applications;
- ▶ Signal group delay and frequency responses;
- ▶ Multipath echo and interference detection, estimation and visualization;
- ▶ Detailed characterization of ATSC 3.0 signal components

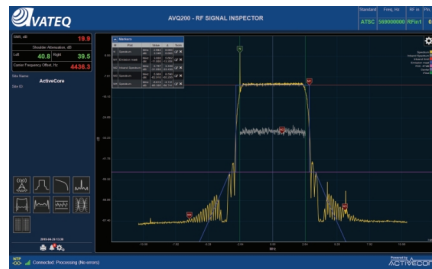
### Applications

- ▶ ATSC 1.0 / ATSC 3.0 coverage area 24/7 QoS monitor;
- ▶ Remote monitoring for broadcasting repeater system network;
- ▶ SFN/Echo profile monitor;
- ▶ In-field and production testing.

### Plot tools and accessories

- ▶ Normal and Delta markers;
- ▶ Min/Max hold;
- ▶ Manual scale adjustment;
- ▶ Cross bar;
- ▶ Thresholds for SFN profile and in-band interference level.

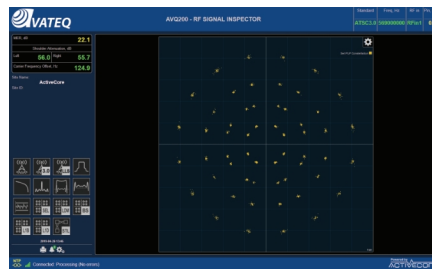
### Samples of Reported Parameters and Plots



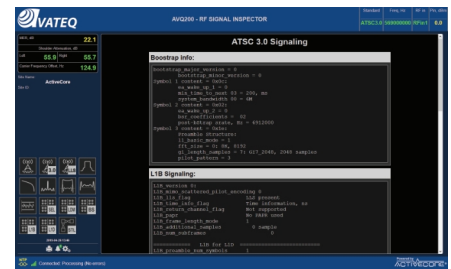
ATSC 1.0 Spectrum with In-Band and Markers



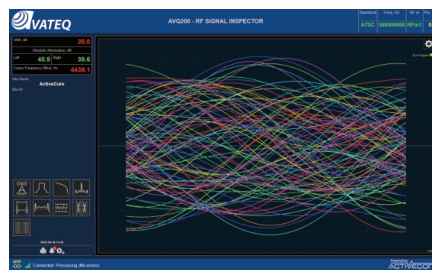
ATSC 1.0 Statistics



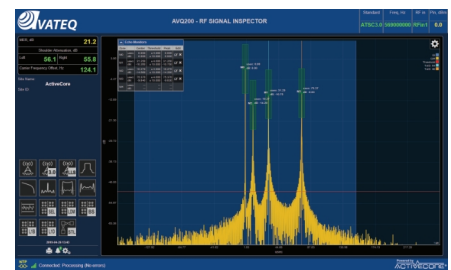
ATSC 3.0 Constellation



ATSC 3.0 Statistics

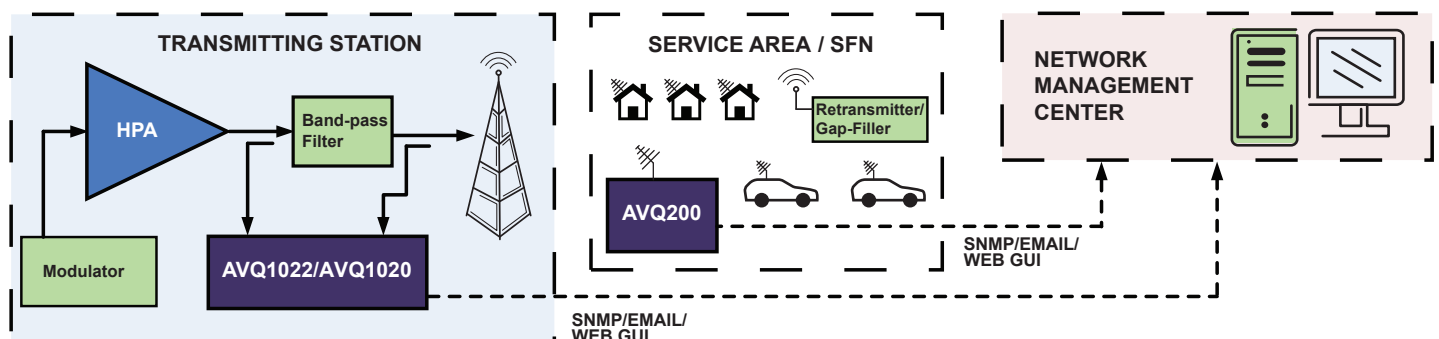


ATSC 1.0 Eye Diagram



ATSC 3.0 SFN / Echo profile with TxIDs

### Application Block-Diagram



### Contact Information

**AVATEQ CORP.**  
3555 - 14th Ave., Unit 18  
Markham, ON L3R 0H5  
Canada

Phone: **1.416.342.0761**  
Fax: **1.416.342.0608**  
E-mail: **info@avateq.com**  
Web: **www.avateq.com**

